

# ECHOCELL II

Non invasive Fat reduction & body contouring  
Cavitation Ultrasound with Interference frequency



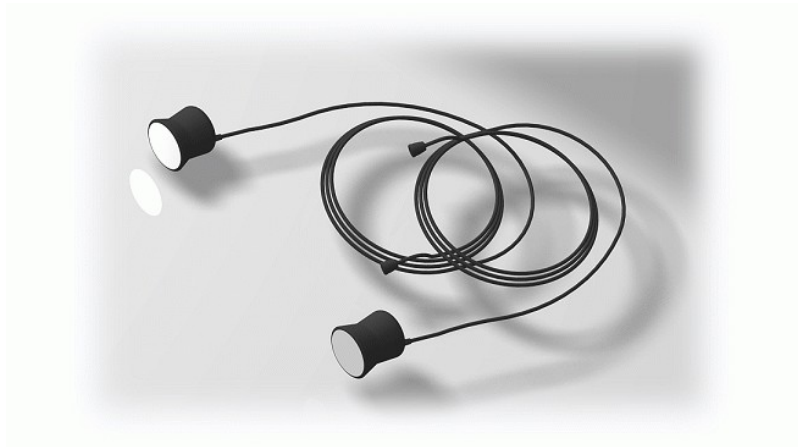
# What's the ECHOCELL II ?

## Fat Reduction & Body Contouring by DOUBLE TREATMENTS

Step 1. Cavitation Ultrasound  
(28khz & 38khz)



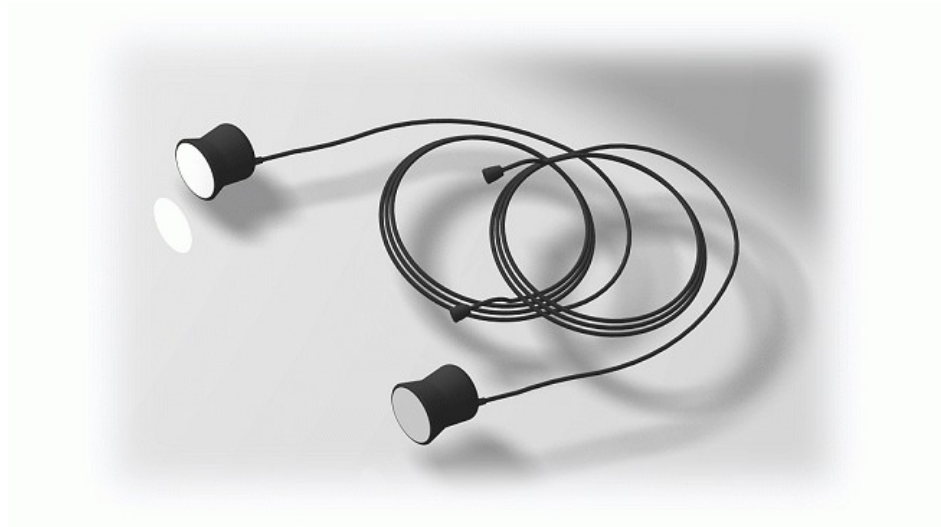
Step 2. Middle frequency  
(Interference)



(Option)  
Abdomen heating pads

: Melting or dissolution of adiposities  
by 28khz or 38khz Cavitation ultrasound

: Excretion of dissolved fat by making muscles  
exercise with powerful & smooth frequency

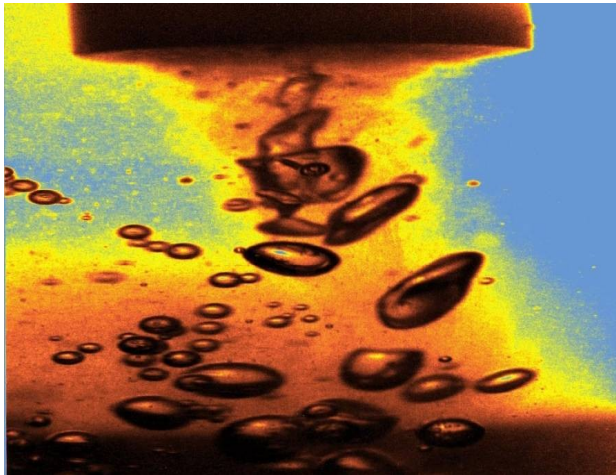


## *Step 1*

CAVITATION ULTRASOUND

# Ultrasound Cavitation Technology

Stable and controlled Ultrasound



: It is a phenomenon that fat cells are dissolved and destroyed by causing cavitation bubbles in cellulite and adipocytes with high energy ultrasound

Effect 1.

Activation of adipocytes and intercellular lipids



Effect 2.

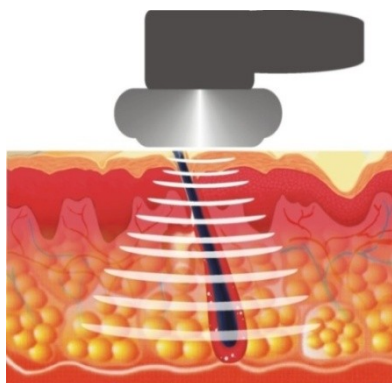
Breaking or dispersing adipocyte and adipocyte's cell membranes

# What's CAVITATION ULTRASOUND?

## Normal Ultrasound

Vibration → Delivery of the wave types to depend on frequency

▶ Dissolution of Cellulite & body shaping.

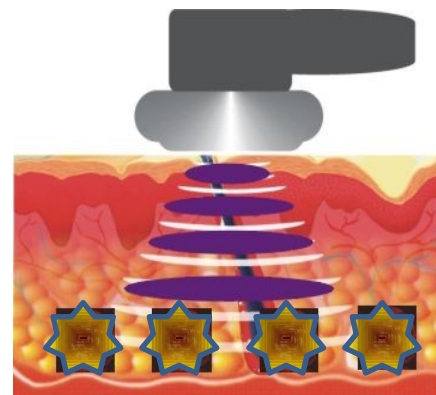


VS

## Cavitation Ultrasound

Vibration → Delivery of low freq. with high energy

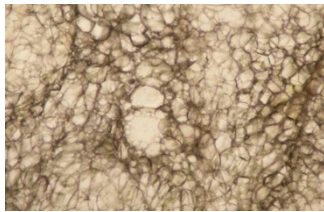
▶ Destruction of Adipocytes & Cell membranes



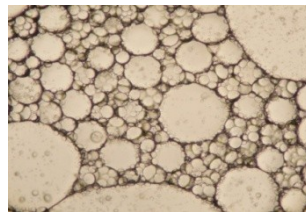
Unlike normal ultrasound, Cavitation ultrasound disperses fat cell membrane directly, so that fat is emulsified and adipocytes are eliminated.

# Process of Cavitation Ultrasound

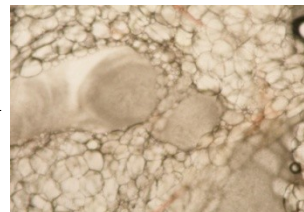
## Destruction and Dissolution of Adipocyte



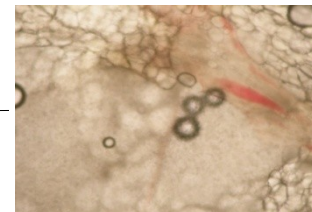
Before Cavitations



5 minutes later



10 minutes later



20 minutes later

1. The energy is delivered into the adipocytes and body fluid by pressure of over  $100\text{kg}/\text{cm}^2$  with low frequency ultrasound
2. Activations of adipocyte and interstitial are improved by delivering an Energetic Implosion
3. Finally cell membrane of adipocyte is destroyed.

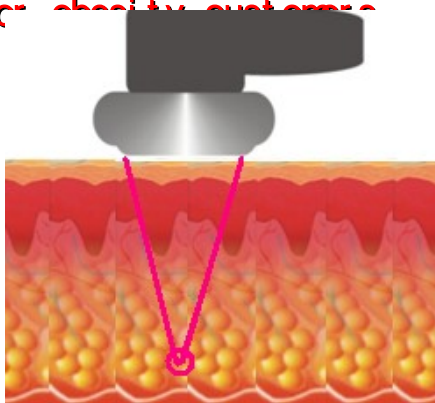
• It is the most important to generate stable and controlled cavitation bubbles using low frequency ultrasound.

## 28KHz VS 38KHz

### 28KHz

- Deeper & more focused Resonance phenomenon than 38kHz, so the energy is intensively provided in deep layer of skin structure.

→ For big fats & deep adipocytes in internal organs or abdomen, and for obesity customers

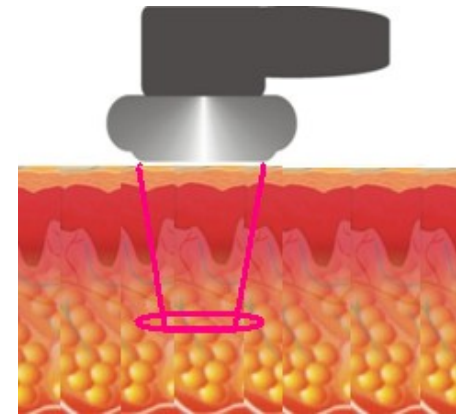


Penetration depth : 3~5cm

### 38KHz

- Lower, but wider of Resonance phenomenon than 28kHz, so the energy is spread on less penetration depth.

→ For less subcutaneous fat or customers with small fat on body.



Penetration depth : 2~3cm

VS

\* Resonance phenomenon is generated from the surface to penetration depth

# Effects of Cavitation

## ➡ Fat reduction & Cellulite decrease

### 1. Cavitations' Effect

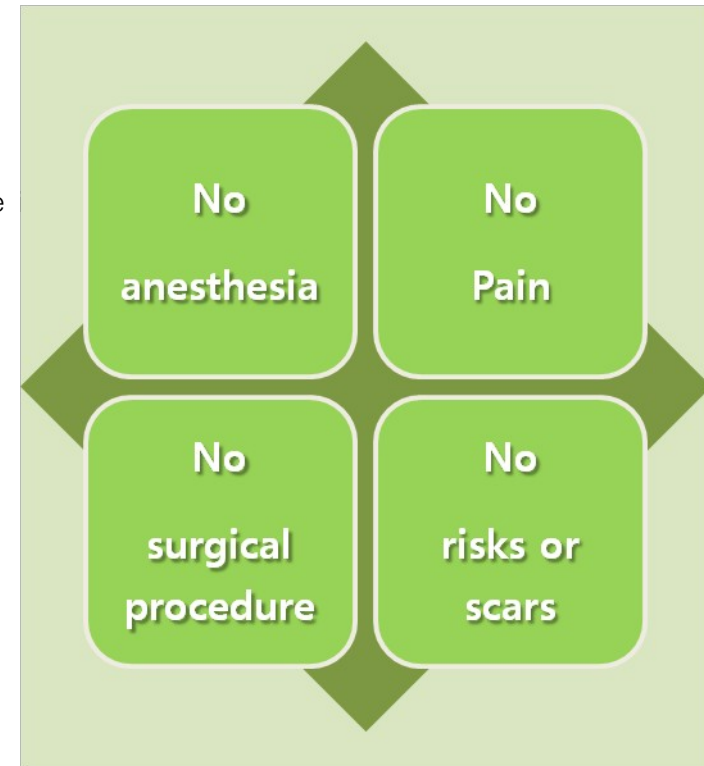
- Breaking down the fat between adipocytes and evacuation into the

### 2. Metabolic Effect

- Increase intra adipocyte pressure by ultrasound vibration
  - Activation of cell movement

### 3. Fibrosis Effect

- Effective actions on the fibrosis and for cellulite reduction



Visible body contouring every time of Cavitation Treatment.



## *Step 2*

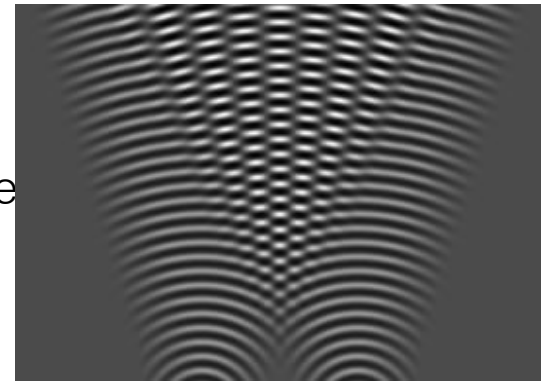
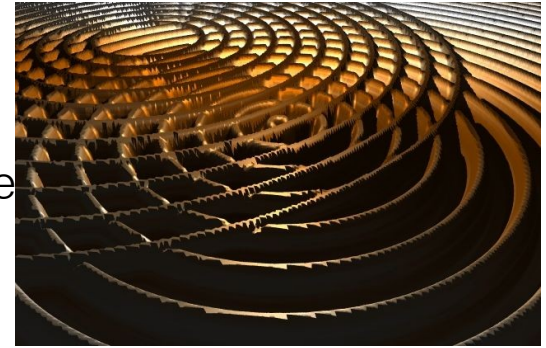
I N T E R F E R E N C E F R E Q U E N C Y

# Interference Frequency

Interference frequency is...

: Historically, it was used for medical purposes which is to decrease muscle cramp pain or relieve muscles by using 4000hz to 4100hz.

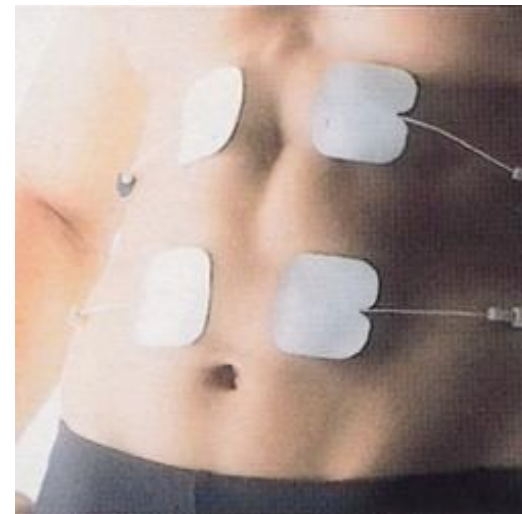
It has less skin resistance enough to enter deeply into the skin, so is able to stimulate muscles directly.



\* Interference frequency is caused by transformed waveforms when two different middle frequencies are crossed within the human body.

# I n t e r f e r e n c e e f f e c t s

1. R e d u c t i o n o f m u s c l e s p a s m / R e l i e f o f p a i n
2. I n c r e a s e i n l o c a l b l o o d s u p p l y
3. I m p r o v e m e n t i n m e t a b o l i c e f f i c i e n c y
4. F a c i l i t a t i o n o f m u s c l e c o n t r a c t i o n i n d y s f u n c t i o n a l o r u n u s e d m u s c l e
5. I n c r e a s e i n m u s c l e s t r e n g t h



# Why Interference frequency



-> Two different frequencies more than 4kHz, having less resistance, generate newly transformed waveforms which can deliver lots of energy currents, therefore stimulate muscles broadly & deeply.

## 1. Comfortable & Smooth feeling, but Strong.

Because of 4 kHz, less resistance makes smooth & comfortable feeling to customers. But the transformed waveforms deliver powerful & broad energy within body.

## 2. Deep penetration to muscle itself

With less resistance and powerful transformed waveforms, it can go into skin deeply and make muscles itself exercise.

## \* Comparing to normal mid frequency,

Interference frequency controls muscles itself because of deep penetration & strong frequency while normal mid/low frequency only controls the nerves on the skin, not muscle itself.

# Cavitation + Interference

DOUBLE EFFECTS ON FAT CELLS  
: Double treatments on Lipolysis  
by Combination of Cavitation  
& Interference

Burn dissolved fat  
fast & effectively

Dissolved Fat

Interference Frequency

Cavitation ultrasound



# ECHOCELL Characteristics

- Maximum adipocyte dissolution & cellulite reduction by 28KHz, 38KHz low frequency ultrasound
- Convenience for specific body parts treatment through stable output controller
- 4 patches for interference frequency
- User friendly interface & simple design
- Easy sizeable & convenient handprobe
- Abdomen heating pad for optional treatment



## MODE

### 1. Cross

: Attach each channel separately

### 2. Normal

: Attach two channels together for

## Programs

**FMA** Tapping-rubbing-Acupressure

(Repeated speedily)

**FMB** T-R-A

**FMC** R-A

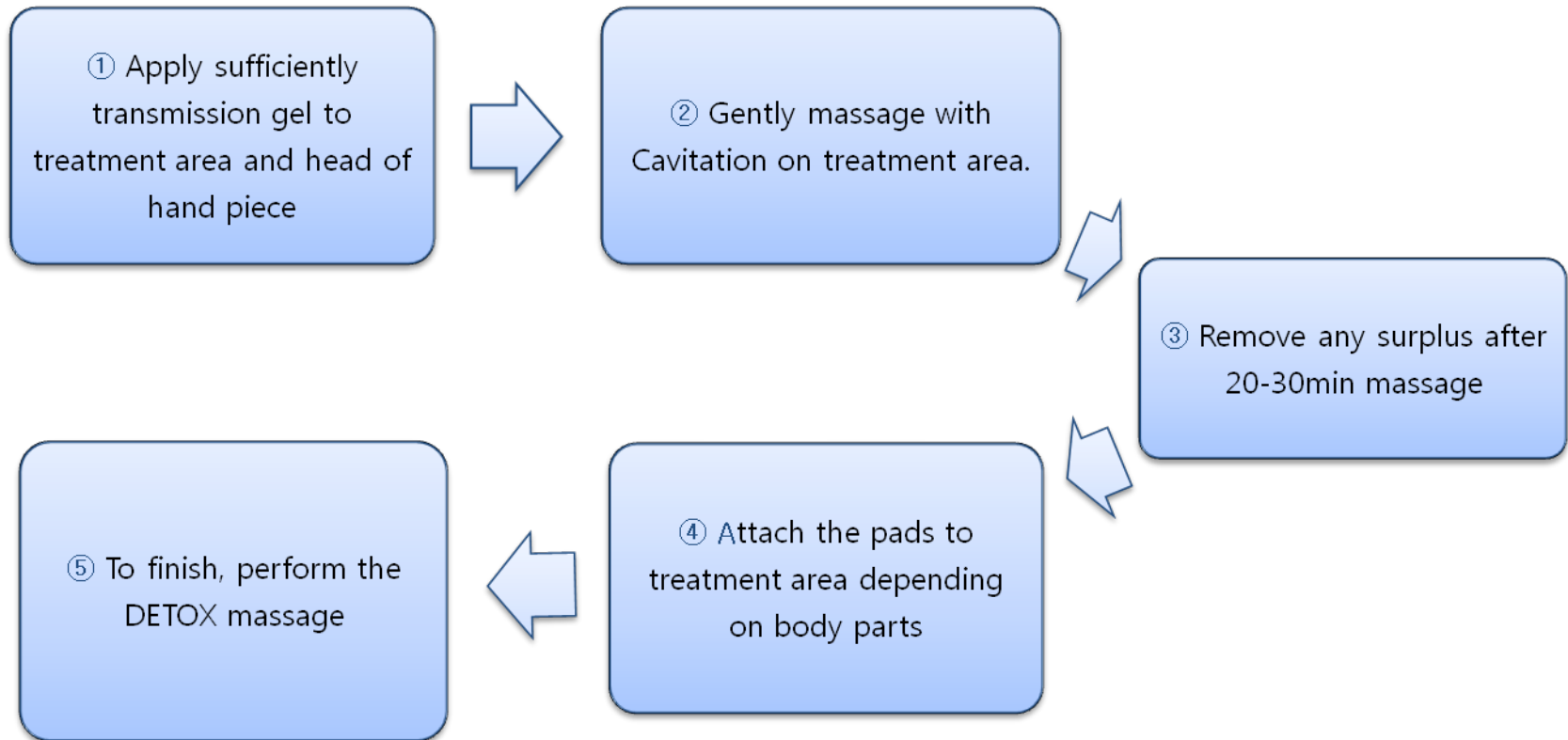
**FMD** only tapping

**FME** Acupressure (long)

Final stage : Rubbing & Tapping.

# Cavitation + Med. Freq application

## \* Treatment Sequence



# SPECIFICATIONS

- MODEL NAME : ECHOCELL II (CM-5350)
- DIMENSIONS : 440 \* 350 \* 130 mm
- WEIGHT : 25Kg
- Power input : 100-110V or 200-220V, 50/60Hz
- Consumption power : MAX 200 Watt
- Ultra Sound Output Frequency
  - : 28KHz  $\pm$  2KHz (Body), 38KHz  $\pm$  2KHz (Body, Face)
- Ultra Sound Output power
  - : MAX 40Watt (28KHz), MAX 60Watt (38KHz Body), MAX 30Watt (38KHz Face)
- Interference high frequency Output Frequency : 4KHz - 3.9KHz
- Interference high frequency Output power : MAX 45mA (LOAD 500 $\Omega$ )
- User interface : 6.0 Inch Monographic / Touch Button type & Volume controller





TOTAL ESTHETIC BUSINESS PARTNER

APRI A – COSMO

DUBROVAČKA 99, OSIJEK 31000 / HR

TEL: 031-210-550

031-210-551

FAX: 031-210-552

MOBI TEL: 00385-98-252-631

WEBSITE : [www.apri a-cosmo.com](http://www.apri a-cosmo.com)

EMAIL : [apri a@apri a.hr](mailto:apri a@apri a.hr)